

# Eastland

700 Eastland Avenue SE, New Prague  
Parade Entry #142



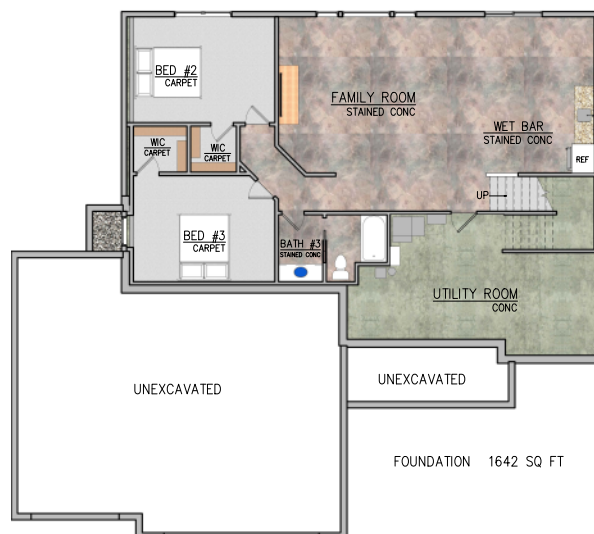
K.A. Witt unveils its latest walkout rambler with a modern craftsman feel. **The Savannah** features:

- Vaulted kitchen & dinette with rustic cedar trusses
- 3 Bedrooms/3 Baths
- Den on main level with barndoors
- Poplar millwork with custom stain color
- Hardboard siding and stone front
- Walk thru from laundry room to master closet
- Luxury Cambria kitchen countertops
- Stainless steel appliances
- Spa like Owner's suite with curbless, walk in shower
- Ceramic tile backsplash at the kitchen
- Custom cabinetry throughout
- Stone fireplace with built-in cabinetry
- Wet bar at lower level
- Stained, concrete floors with in-floor heat at basement
- 2918 Finished Square Feet

All the quality and character you've come to expect from a K.A. Witt home!



Land Cost	\$64,900
Construction Cost	\$425,000
Total Cost	\$489,900



*A Family Tradition since 1934*

K.A. Witt Construction is a fourth generation residential and commercial builder since 1934. Through years of experience, learning and hands-on involvement, building has become our family's tradition.

Our build process is unlike any other. The Witt Team, consisting of an owner, interior designer and draftsman, will guide you through the build from start to finish. The end result? Your K.A. Witt home created specifically for your family, built with the latest technology at an unbelievable value!

We welcome you to visit our model, share in our enthusiasm for building and let our quality and attention to detail speak for itself.

Additionally, Witt Construction's services extend beyond residential and commercial construction, they include:

- Excavation (parks, site development, roads)
- Real Estate Sales
- On-site Auto CAD Plan Development
- Remodeling & Restoration
- Septic Design & Installation
- Townhomes
- Interior Design
- Pools
- Concrete (patios, driveways, sidewalks)
- Fencing

In choosing Witt Construction, it means only one thing  
- Distinct Quality at an Unbelievable Value

**Jason Witt**

Jason@kawitt.com

952.758.2108

612.369.3362

**Chris Witt**

Chris@kawitt.com

952.758.2108

612.369.5965

[www.KAWitt.com](http://www.KAWitt.com)

